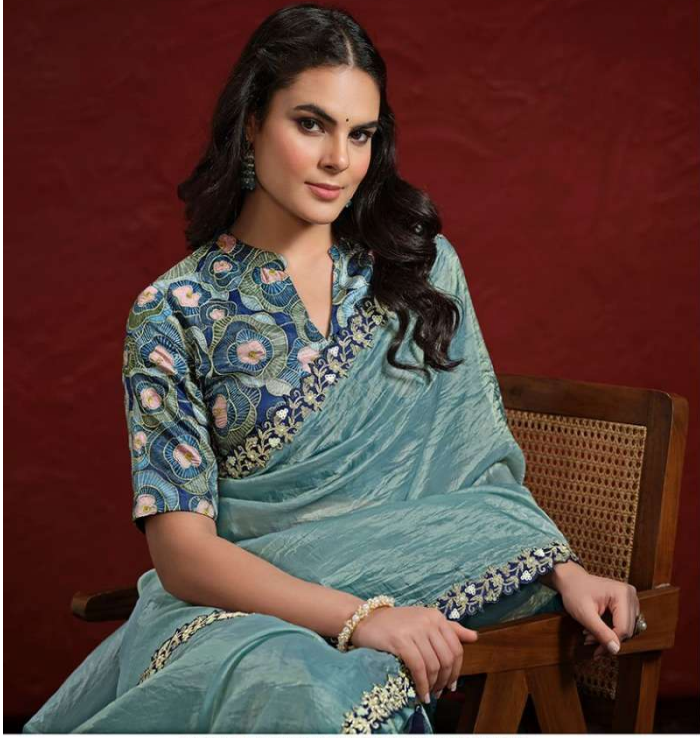


~~~~~ *Attractive Always* ~~~~~



"What's my style is not your style, and I don't see how you can define it. It's something that expresses who you are in your own way."



**24208**

FABRIC : PAPER SILK PLEAT  
BLOUSE : RANGKAT EMBROIDERY *Ready to wear*

MORDEN STYLE

"I truly believe that with the right mindset one can rule the world!"



24201

FABRIC : NATURAL CREPE GEORGETTE SILK

BLOUSE : EMBROIDERY APPLIC LOOK *Ready to wear*

WE HAVE USED *Festive Colours*  
which signifies joy  
Celebration, and prosperity.



24202

FABRIC : PAPER SILK CRINKLE  
BLOUSE : RANGKAT EMBROIDERY *Ready to wear*





24202  
FABRIC : PAPER SILK CRINKLE  
BLOUSE : RANGKAT EMBROIDERY *Ready to wear*



24202B

FABRIC : PAPER SILK CRINKLE

BLOUSE : RANGKAT EMBROIDERY *Ready to wear*





24202 C

FABRIC : PAPER SILK CRINKLE

BLOUSE : RANGKAT EMBROIDERY *Ready to wear*

| DESIGN NO | SAREE FABRIC                   | BLOUSE FABRIC   | Work                     | Saree Type | CUSTZ.(SEMISTITCH/UN-STITCH) | BLOUSE SIZE                          |
|-----------|--------------------------------|-----------------|--------------------------|------------|------------------------------|--------------------------------------|
| 24201     | Natural Crepe Georgette Silk   | Emb Applic look | Sequence with Handwork   | Regular    | Stitched Blouse              | up to 38 Inch with margin of 42 inch |
| 24202     | Crush Paper Silk               | Rangkat Emb     | Sequence with Handwork   | Regular    | Stitched Blouse              | up to 38 Inch with margin of 42 inch |
| 24202-B   | Crush Paper Silk               | Rangkat Emb     | Sequence with Handwork   | Regular    | Stitched Blouse              | up to 38 Inch with margin of 42 inch |
| 24202-C   | Crush Paper Silk               | Rangkat Emb     | Sequence with Handwork   | Regular    | Stitched Blouse              | up to 38 Inch with margin of 42 inch |
| 24204     | Two Tone Jacquard Butti Tusser | Weave Rangkat   | Pure Cut work            | Regular    | Stitched Blouse              | up to 38 Inch with margin of 42 inch |
| 24205     | Pure Banarasi Jari pleat       | Weave Rangkat   | Stone with Handwork      | Regular    | Stitched Blouse              | up to 38 Inch with margin of 42 inch |
| 24207     | Pure Banarasi Jari Crinkle     | Rangkat Emb     | Sequence with Handwork   | Regular    | Stitched Blouse              | up to 38 Inch with margin of 42 inch |
| 24208     | Paper Silk Pleat               | Rangkat Emb     | Moti with Handwork       | Regular    | Stitched Blouse              | up to 38 Inch with margin of 42 inch |
| 24209     | Dolla Silk Crinkle/Upada Silk  | Weave Rangkat   | Pure hand with moti work | Regular    | Stitched Blouse              | up to 38 Inch with margin of 42 inch |

*Every design*  
is carefully Crafted  
With love and care.



24204

FABRIC : TWO TONE JACQUARD BUTTI TUSSER  
BLOUSE : WEAVE RANGKAT *Ready to wear*





*A collection*  
In which each saree  
mirrors your unique style.











\*\*\* INTRODUCING \*\*\*

# *Aaina*

FESTIVE WEAR COLLECTION: CELEBRATE WITH OUR BEAUTIFUL AND  
EASY-TO-STYLE PIECES THAT SHINE AT ANY OCCASION



~~~~~ *Attractive Always* ~~~~~



"What's my style is not your style, and I don't see how you can define it. It's something that expresses who you are in your own way."



24208
FABRIC : PAPER SILK PLEAT
BLOUSE : RANGKAT EMBROIDERY *Ready to wear*



Celebrated New

beginning with the
refreshing colours that symbolise a
fresh beginning.



24209

FABRIC : DOLLA SILK CRINKLE
BLOUSE : WEAVE RANGKAT *Ready to wear*

Fresh Beginning

"Don't be into trends. Don't make fashions own you, but you decide what you are, what you want to express by the way you dress and the way to live."

