



Vimla

5504



Vimla

5504

A woman is the central figure, wearing a vibrant yellow traditional Indian ensemble. The outfit consists of a long-sleeved kurta with a decorative neckline and a matching dupatta (scarf) adorned with large, colorful floral patterns in shades of pink, red, and blue. She is also wearing yellow trousers with a decorative border at the hem. Her accessories include a large, ornate necklace with green and red stones, matching earrings, a headpiece with circular ornaments, and a bracelet. She is standing in a richly decorated room with intricate carvings on the wall and a dark red carpet. The lighting is dramatic, highlighting the textures and colors of the clothing.

Vimla

5501

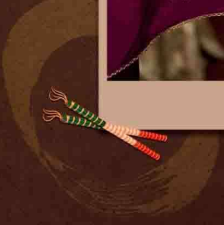
A woman is the central figure, wearing a vibrant green ensemble. Her attire includes a long-sleeved kurta with intricate gold embroidery around the neckline and scattered motifs, paired with matching green trousers. A matching green shawl with a delicate floral pattern and gold trim is draped over her shoulders. Her jewelry is elaborate, featuring a large necklace with green beads and gold accents, matching earrings, a bindi, and several bangles and rings. She stands with her hands clasped in front of her. The background is a rich, dark brown wall with a highly detailed, carved archway (prabhavali) featuring floral and geometric patterns. To the right, a traditional brass oil lamp (diya) is visible. The overall lighting is warm and dramatic, highlighting the textures of the fabric and the depth of the carvings.

Vimla

5503



विद्यया ऽमि कुरुते । नानावरी ॥ १॥ बुद्ध्या बुद्ध्या कुरुते । कुरुते कुरुते । कुरुते कुरुते ।



Vimla

5502





Vimla



D NO-5501



D NO-5502



D NO-5503



D NO-5504



© 2015 Vimla. All rights reserved. Vimla is a registered trademark of Vimla. Vimla is a registered trademark of Vimla. Vimla is a registered trademark of Vimla.

