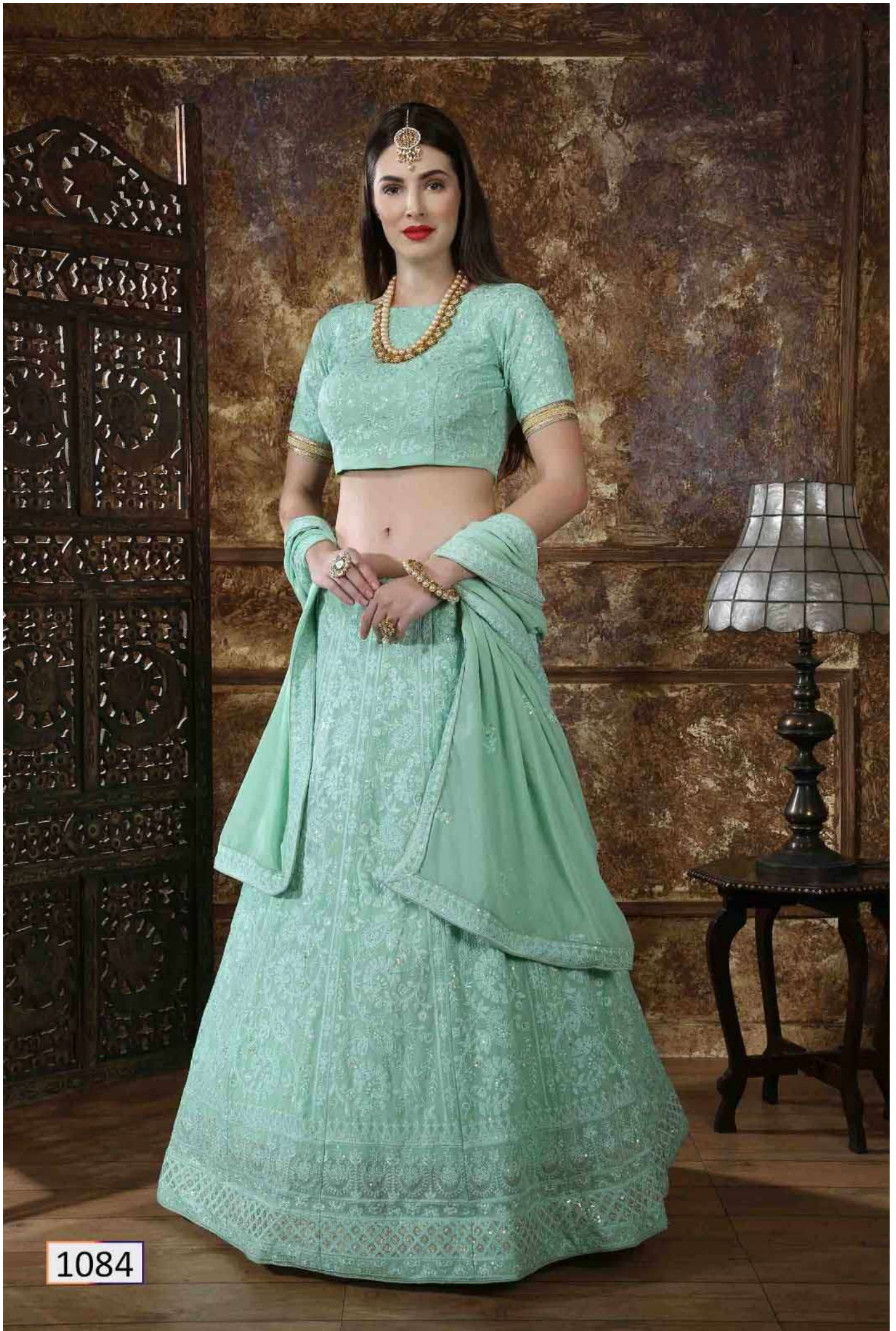




1082





1084





1124





1205





1214





1213





1223





1241





1313





1325





1343





1021

1082

1084

1102

1116



1205

1213

1214

1223

1241



1313

1325

1343

1352

| Design NO. (SKU) | Main Color     | Lehenga Fabric | Choli Fabric | Dupatta Fabric | Size              | Lehenga Work (Semi Stitched) | Choli Work (UN-Stitched)   | Dupatta Work                       |
|------------------|----------------|----------------|--------------|----------------|-------------------|------------------------------|----------------------------|------------------------------------|
| 1021             | Mint Green     | Silk           | Silk         | NET            | 42 BUST AND WAIST | Embroidered Work             | Embroidered Work           | Embroidered Work                   |
| 1082             | Pink           | Silk           | Silk         | NET            | 42 BUST AND WAIST | Thread with Seq. Emb. Work   | Thread with Seq. Emb. Work | Thread with Seq. Emb. Work         |
| 1084             | Green          | Silk           | Silk         | NET            | 42 BUST AND WAIST | Thread with Seq. Emb. Work   | Thread with Seq. Emb. Work | Thread with Seq. Emb. Work         |
| 1102             | Mustard        | Thai Silk      | Thai Silk    | NET            | 42 BUST AND WAIST | Thread with Seq. Emb. Work   | Thread with Seq. Emb. Work | Lace on Border                     |
| 1124             | Navy           | Thai Silk      | Thai Silk    | NET            | 42 BUST AND WAIST | Thread with Seq. Emb. Work   | Thread with Seq. Emb. Work | Lace on Border                     |
| 1205             | Yellow         | Thai Silk      | Thai Silk    | NET            | 42 BUST AND WAIST | Thread with Seq. Emb. Work   | Thread with Seq. Emb. Work | Lace on Border                     |
| 1213             | Sky            | NET            | NET          | NET            | 42 BUST AND WAIST | Thread with Seq. Emb. Work   | Thread with Seq. Emb. Work | Thread with Seq. Emb. Work         |
| 1214             | Mustard Yellow | NET            | NET          | NET            | 42 BUST AND WAIST | Thread with Seq. Emb. Work   | Thread with Seq. Emb. Work | Thread with Seq. Emb. Work         |
| 1223             | Baby Pink      | Georgette      | Georgette    | Georgette      | 42 BUST AND WAIST | Thread with Seq. Emb. Work   | Thread with Seq. Emb. Work | Thread with Seq. Emb. Work         |
| 1241             | Yellow         | Art Silk       | Georgette    | Organza        | 42 BUST AND WAIST | Thread with Seq. Emb. Work   | Thread with Seq. Emb. Work | -                                  |
| 1313             | Grey           | NET            | NET          | NET            | 42 BUST AND WAIST | Coding Emb. Work             | Coding Emb. Work           | Lace on Border                     |
| 1325             | Dusty Pink     | NET            | NET          | Chinon         | 42 BUST AND WAIST | Seq. Emb. Work               | Seq. Emb. Work             | Thread with Seq. Emb. Work         |
| 1343             | Orange         | NET            | NET          | NET            | 42 BUST AND WAIST | Thread with Seq. Emb. Work   | Thread with Seq. Emb. Work | Tassels on Border                  |
| 1352             | Peach          | NET            | NET          | NET            | 42 BUST AND WAIST | Thread with Seq. Emb. Work   | Thread with Seq. Emb. Work | Pearl Rivet Stone Pasting All Over |





1352





1021





1082





1102